

150MSJ-5

CLAMP UNIT

ITEM		UNIT	SPECIFICATION		NOTES
			Inch	(Metric)	
Max. Mold Clamping Force		US. ton	143	(130)	
Mold Opening Force		(Metric ton)	8.3	(7.5)	
Mold Closing Speed		ft/min	173.9	(53)	
Mold Opening Speed		(m/min)	164.1	(50.0)	
Platen	(H)	inch (mm)	29.13	(740)	
Size	(V)		29.13	(740)	
Clearance between	(H)		20.67	(525)	
Tie Bars	(V)		20.67	(525)	
Maximum Clamp Stroke			24.0	(610)	
Maximum Daylight			33.5	(850)	
Minimum Mold Thickness			9.4	(239)	
Hydraulic ejector			US ton (Metric ton)	3.9	
Stroke		inch (mm)	3.9	(100)	
Maximum Mold Size	Hor. load (H)	inch (mm)	29.13	(740)	
	(V)		20.28	(515)	
	Ver. Load (H)		20.28	(515)	
	(V)		29.13	(740)	
Minimum Mold Size	(H)		.	Full clamp tonnage	
	(V)		.		

150MSJ-5

INJECTION UNIT

ITEM		UNIT	SPECIFICATION		NOTES
			Inch	(Metric)	
Theoretical Injection Volume		cu.in (cm ³)	9.0	(148)	
Inj. Shot Weight	PS	oz	4.8	(136)	
	PE	(g)	3.8	(108)	
Plasticizing Capacity	PS	lbs/hr	177	(80)	
		(kg/hr)			
Max. Injection Pressure		psi (kg/cm ²)	28440	(2000)	
Injection Rate	Standard	cu.in /sec	9.8	(160)	
	Option	(cm3/sec)	0.0		
Injection Horse Power		HP (PS)	43		
Screw Diameter		in (mm)	1.42	(36)	
Screw L/D		---		20	
Screw Stroke		in (mm)			
Screw Speed	High speed	rpm	~ 350		
	Mid. speed		~		
	Low speed		~		
Nozzle protrusion		in (mm)	1.18	(30)	

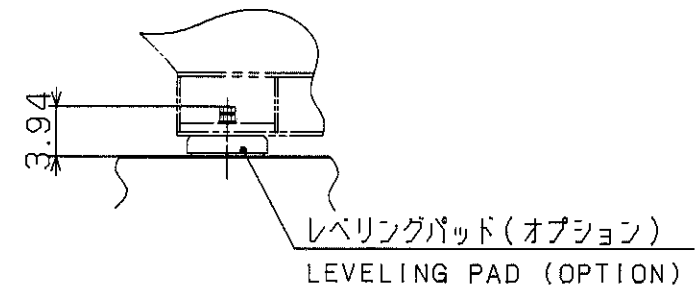
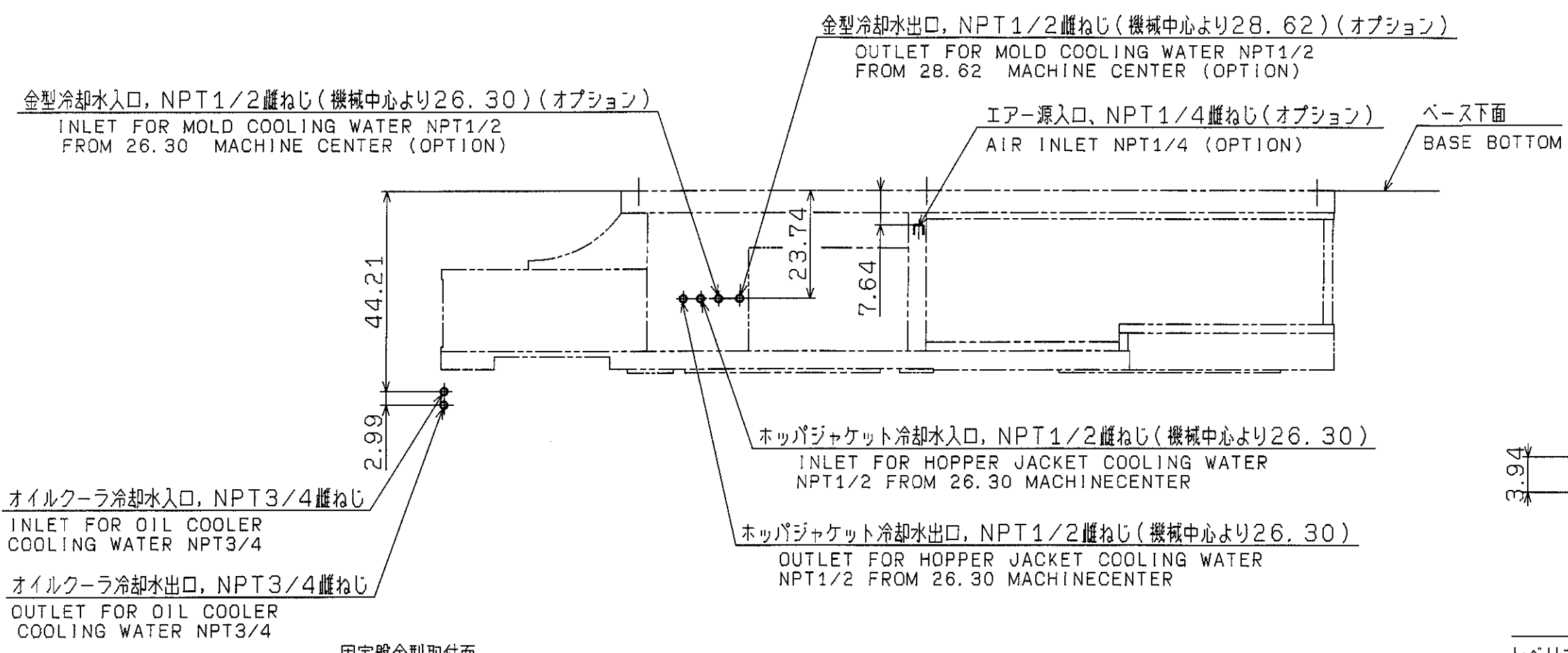
150MSJ-5**GENERAL**

ITEM	UNIT	SPECIFICATION		NOTES
		Inch	(Metric)	
Electric Motor Capacity	HP (kw)	25	(19)	19kw
Electric Heater Capacity for Screw Barrel	kw	6.15		
Electric Heater Capacity for standard Nozzle		0.3		
Oil reservoir Capacity	us gal (ltr)	87.2	(330)	
Overall Dimension	(L)	ft	16.7	(5.1)
	(W)	(m)	4.9	(1.5)
	(H)		5.9	(1.8)
Machine Weight	us ton (metric ton)	7.2	(6.5)	

Remarks

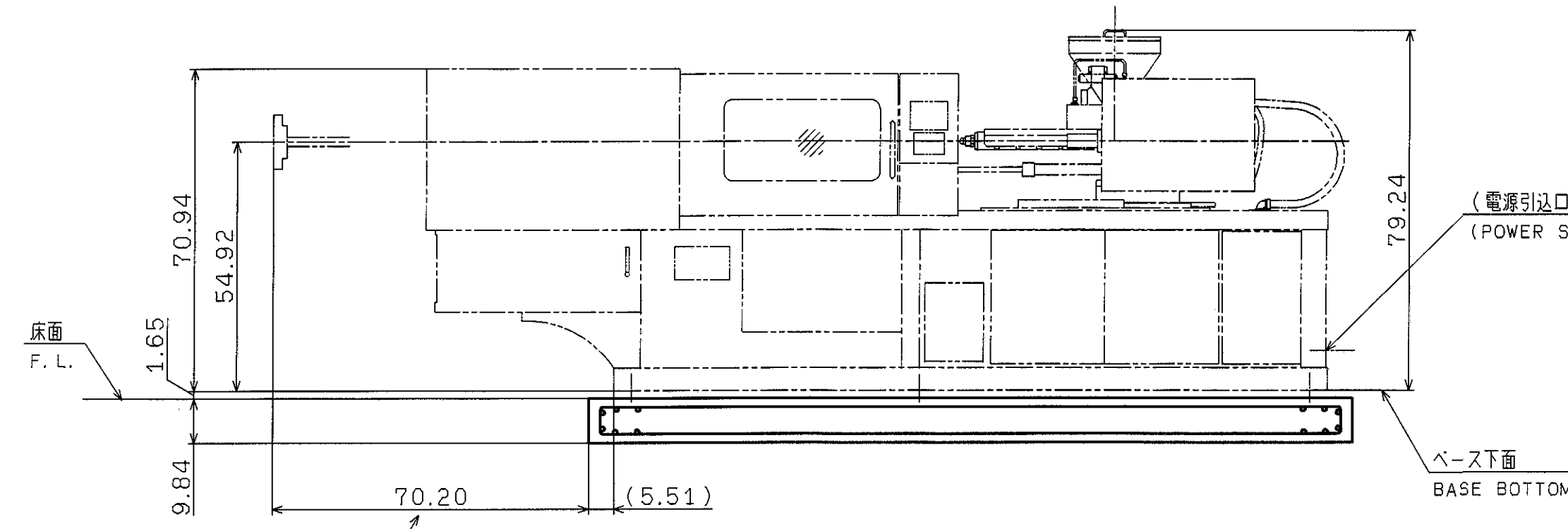
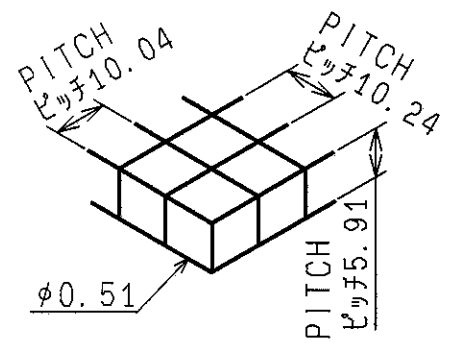
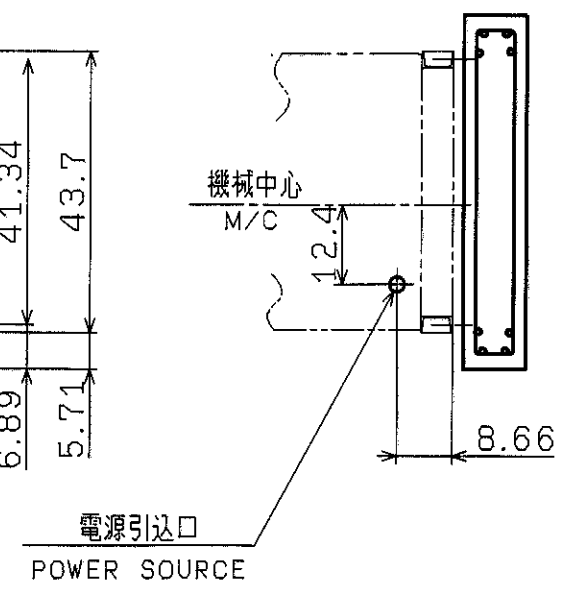
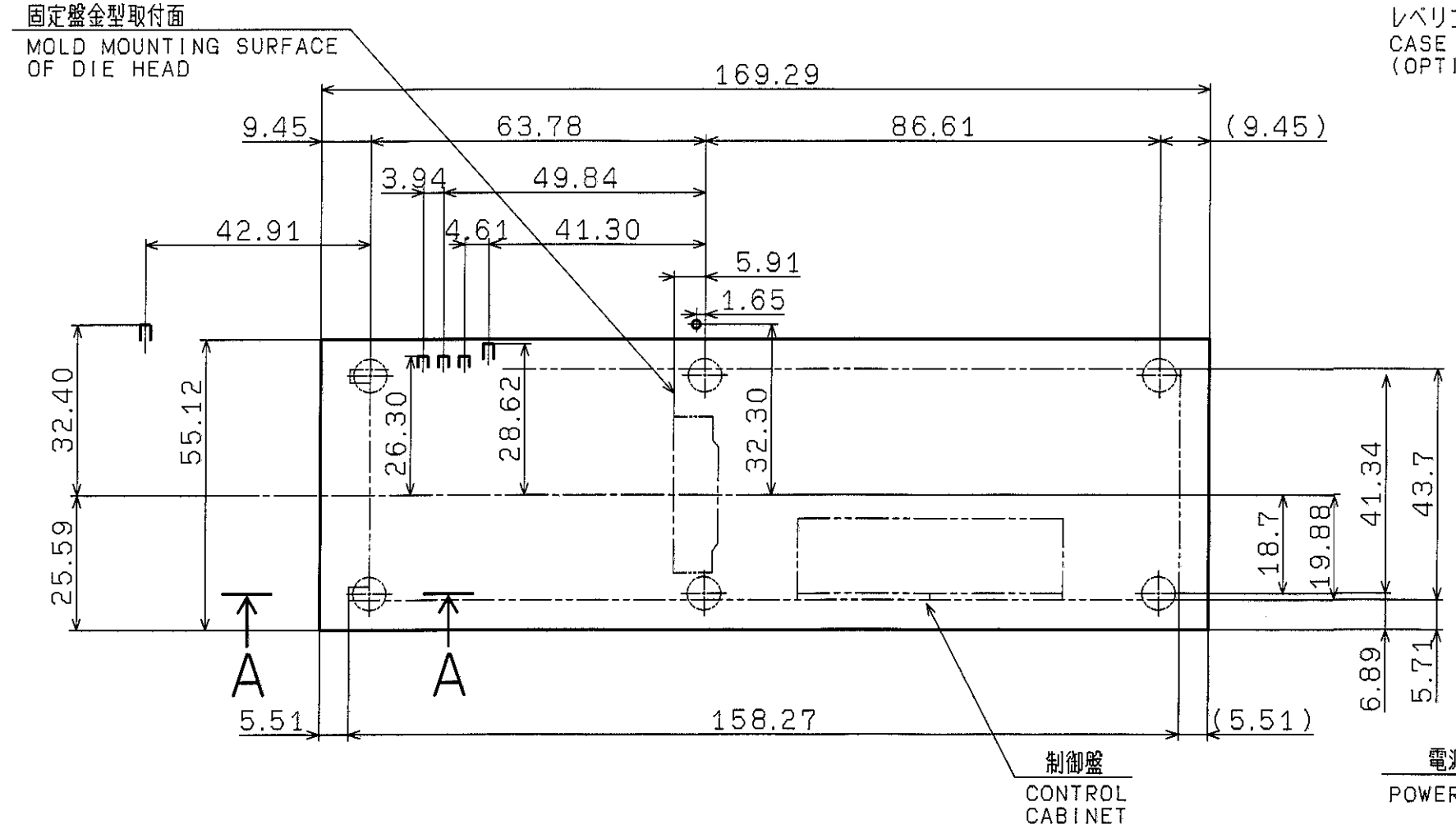
1. Injection weight, injection rate and plasticizing capacity are dependent upon molding conditions and resin used.
2. Specifications are subject to change without notice.

図形 A1	実用(標準-工事) (A194-サブA194)	改訂 見直し	理由	年月日 13.1.13
----------	----------------------------	-----------	----	----------------



A-A (1:15)
レベリングパッド(オプション)の場合 (6箇所共)
(OPTION)
CASE OF LEVELING PAD (ALL 6 POINTS)
(OPTION)

- PLEASE ADOPT THE REINFORCED CONCRETE TO THE FOUNDATIONS.
- BEARING CAPACITY OF SOIL SHOULD BE OVER 7.11 t/in^2 AND IN CASE UNDER 7.11 t/in^2 IT IS NECESSARY TO BE REINFORCED WITH CONCRETE PILES.
- GROUTING OF BASE FEET IS RECOMMENDED.
- WEIGHT
MACHINE : 7.08 US-ton
DIE : 0.99 US-ton
OIL : 0.32 US-ton
TOTAL : 8.39 US-ton
- FOUNDATION WEIGHT : 3.86 US-ton
- IN THE CASE OF SEATING THE FOUNDATION WITH MOUNTING PAD, THE OUTSIDE PIPING SHALL BE DESIGNED WITH FLEXIBLE JOINT DEVICE.
- ALL DIMENSIONS ARE SHOWN IN INCH.



プースタラムの取外しに必要を寸法
MAINTENANCE SPACE FOR BOOSTER RAM

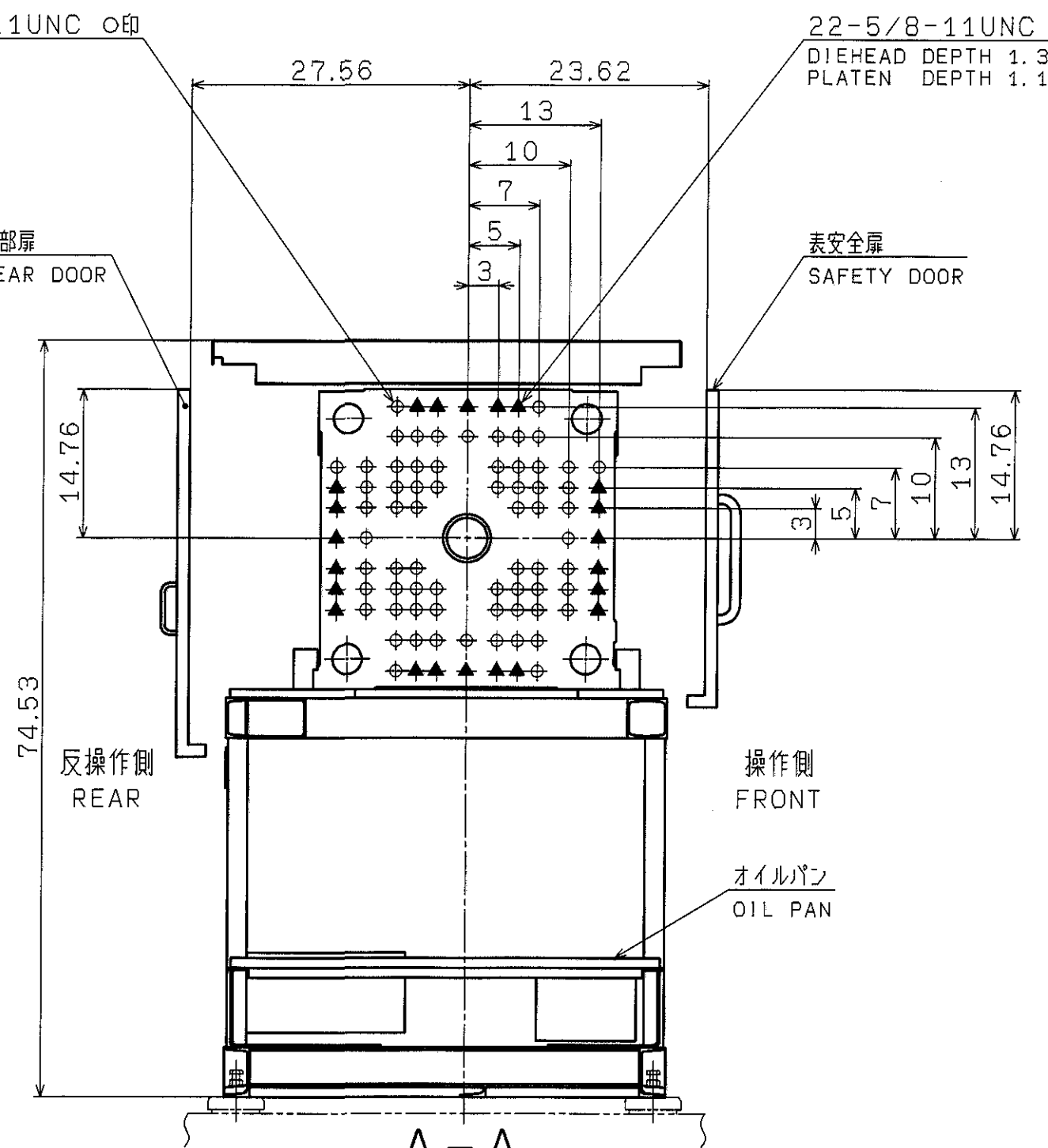
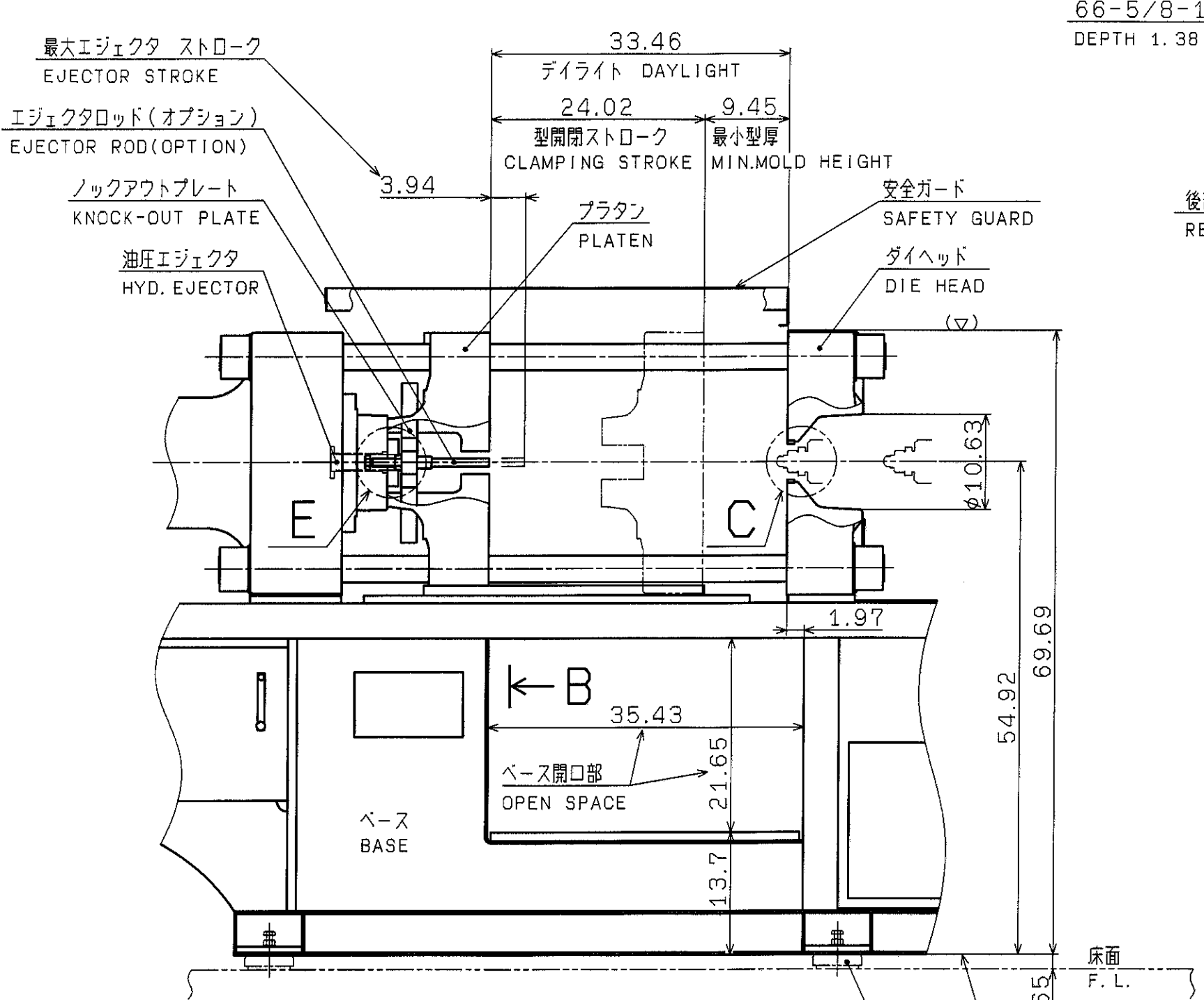
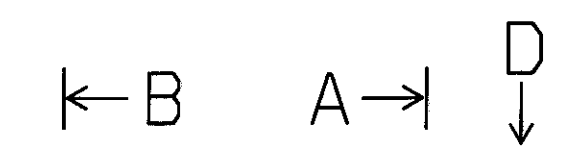
形式 MODEL 150MSJ-5	三角法 3RD ANGLE PROJECTION	尺 SCALE 1/30	名称 NAME 基礎図 FOUNDATION
承認 APPROVED 大 野 せ き	検閲 CHECKED サ 田 ト 区 ワ 瀬	製図 DRAWN 水野 12.6.22	番 号 B/M/図番 DWG. NO. 3HK90815

図形
A1
00A
00A
00A

ICAD区分
A:全CAD
B:半CAD
プランク:手書き
【図庫区分】
A:加工品
B:資材
C:購入品
D:組立品
P:電加工品
R:電線用品
S:電線用品
T:電線用品

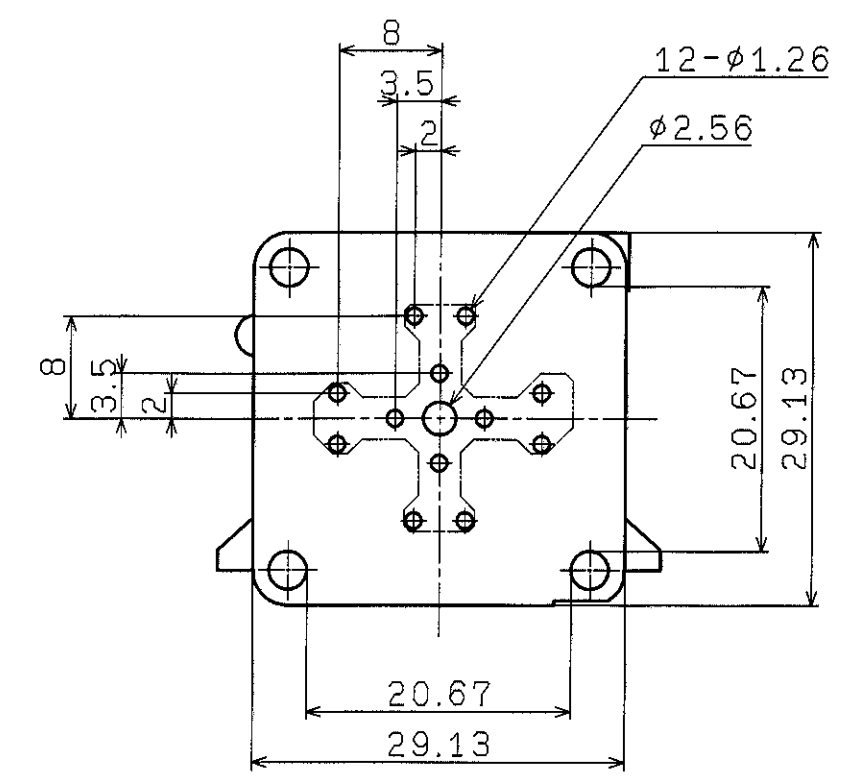
CAD	M	A
図種	AD	
図番		
図名		
図尺		
図小		

図号	実用(形番・工事) (オプション・サブイテム)	改訂記事	理由	図司 年・月・日
△A	000-09	・見直し		大塚 12.11.29
△B	000-09	・見直し		大塚 13.1.15

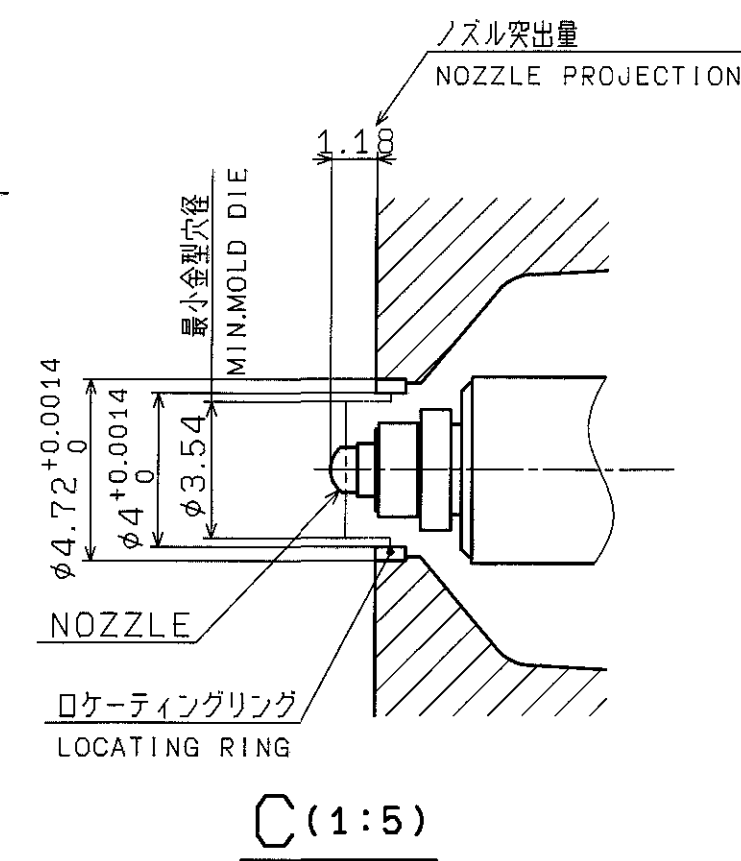
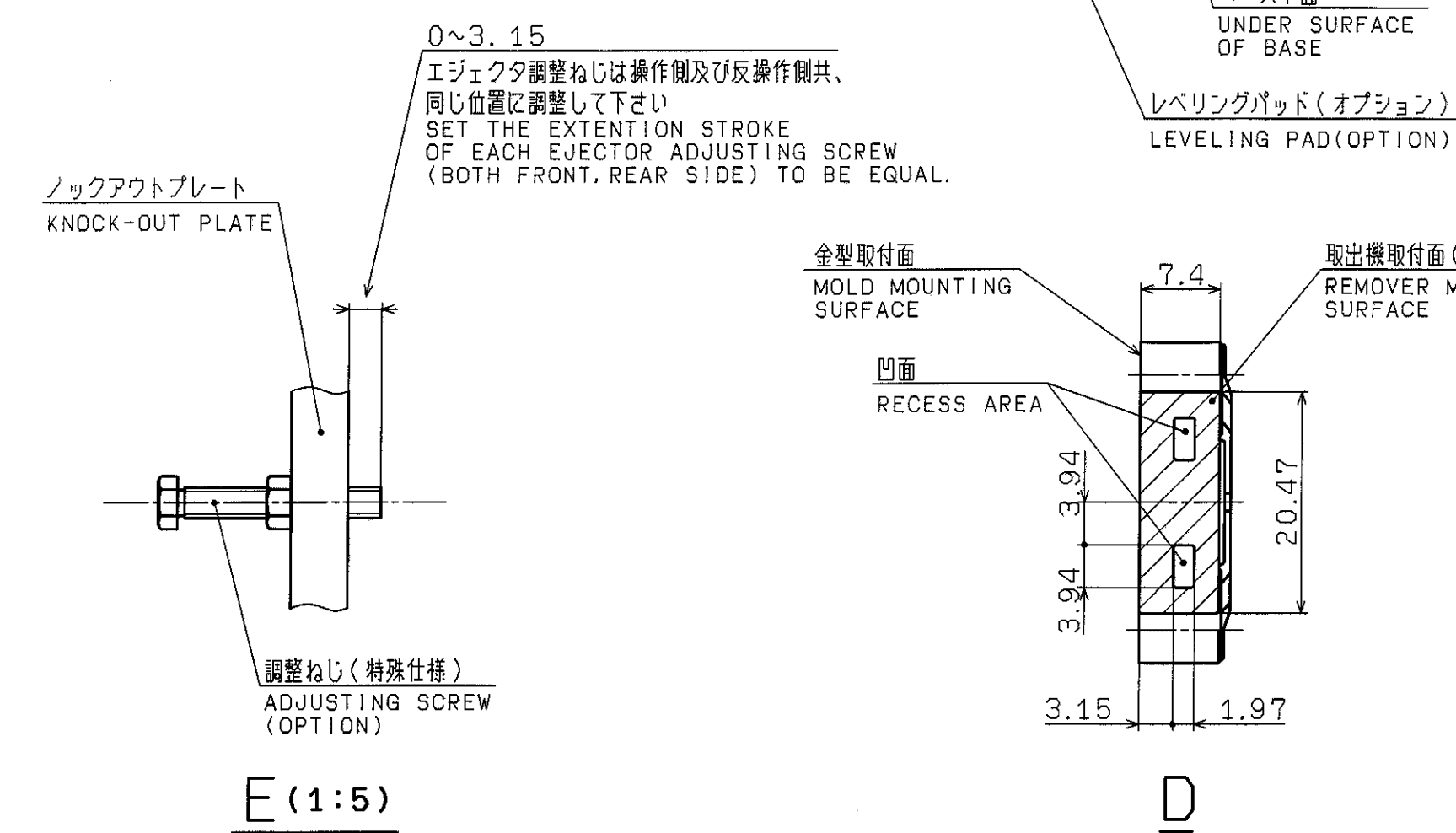


1. MIN. MOLD SIZE : 10.63X10.63 (WHEN CLAMPING FORCE IS 150 sh-ton)
2. STANDARD LOCATING RING INSIDE DIAMETER IS $\phi 4$
3. MAX. MOLD WEIGHT (CORE) 915 lb.
4. ALL DIMENSIONS ARE SHOWN IN INCH.

A-A
(金型取付ねじ穴配置)
(ダイヘッド, プラタンとも同一)
(ARRANGEMENT OF MOLD ATTACHMENT SCREW HOLES
ARRANGEMENT ON DIEHEAD AND PLATEN IS SIMILAR)



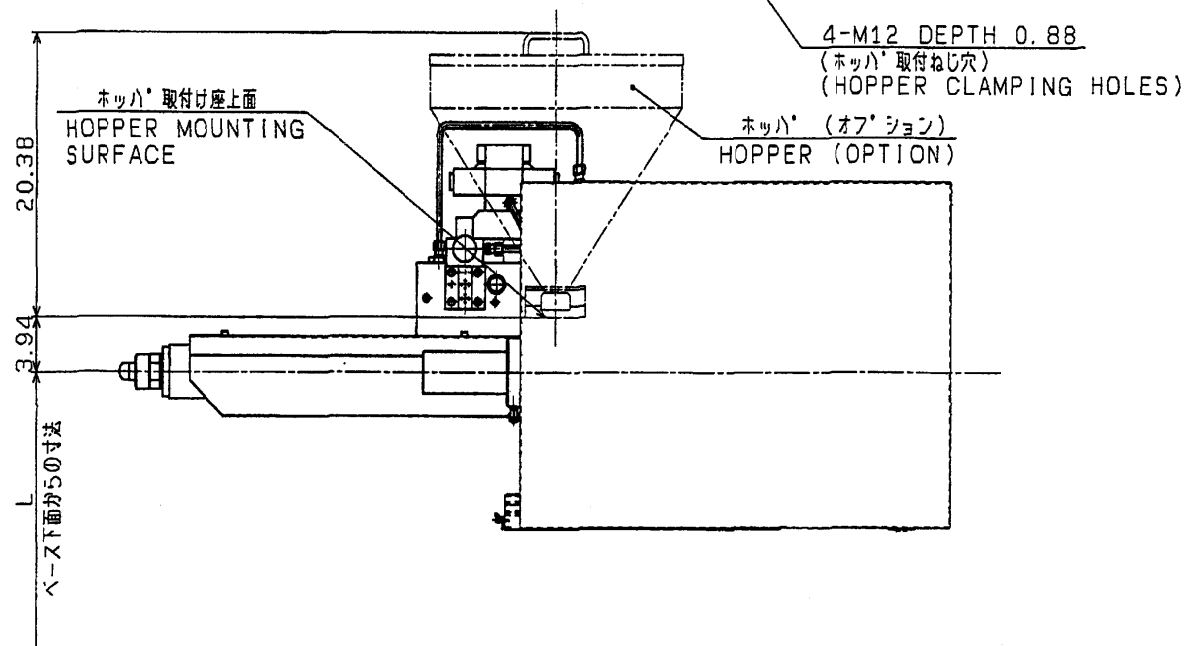
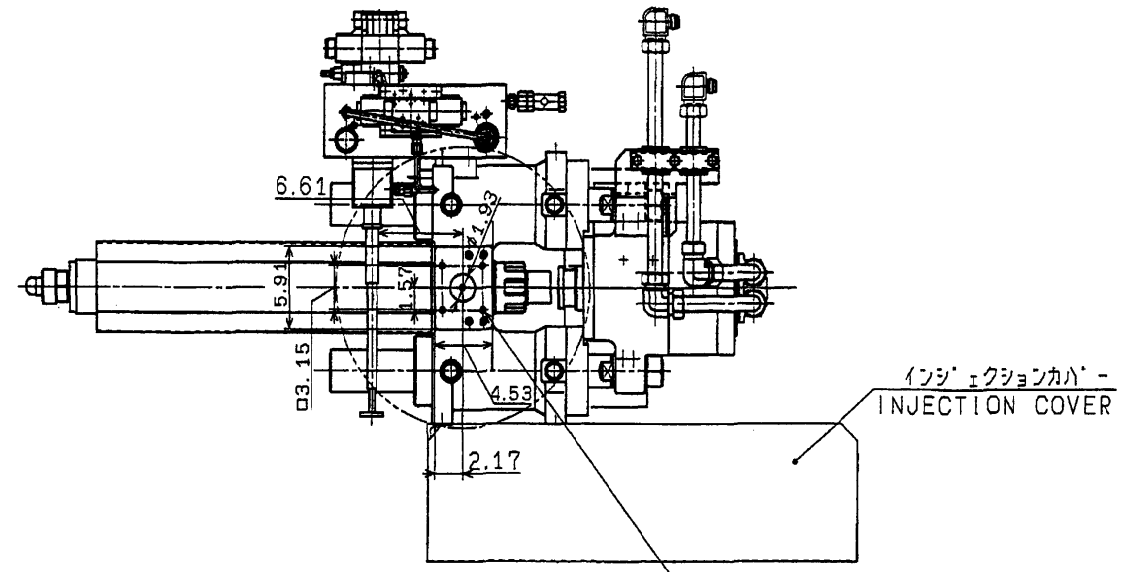
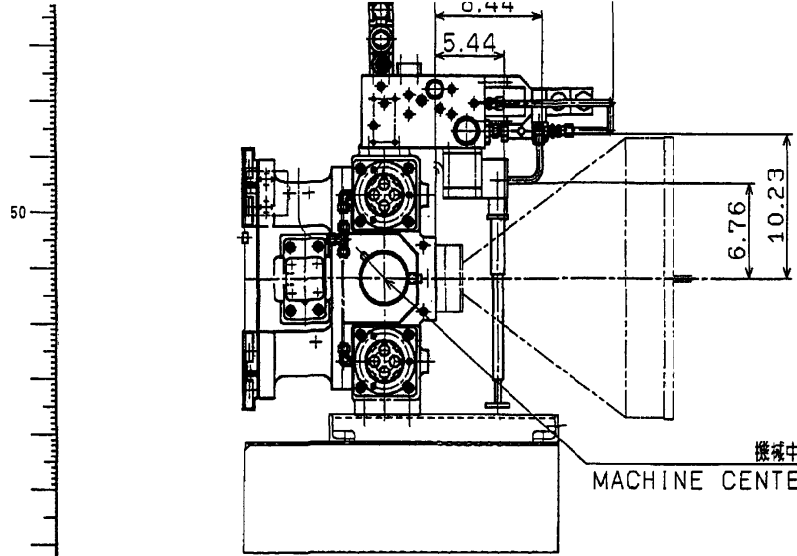
B-B
(エジェクタ穴配置)
(ARRANGEMENT OF EJECTOR HOLES)



C (1:5)

形式 MODEL 150MSJ	三角法 3rd ANGLE PROJECTION	尺 SCALE 1/15	名称 NAME 金型取付寸法図 DIE SPACE
図 NEXT ASS'Y	製図 DRAWN 山本	承認 APPROVED 大塚	検査 CHECKED サトウ
DWG. NO. 3HK93518		SUFFIX MARK PAGE	

図形 3HK93518
 形式 150MSJ
 図号 A2/28/30
 13:55
 ODA
 ICAD区分
 A:全CAD
 B:半CAD
 プラック:手書き
 【図形区分】
 A:加工品
 B:鋳物
 C:購入品
 D:組立品
 P:電加工品
 R:電鍍品
 S:電ソド品
 T:電鍍品
 CAD M A
 図種 AD
 図名
 図番
 図尺
 図寸 縮小
 A2 -



機種	L
90MSJ-5HD	51.38
150MSJ-5HD	54.92

MODEL 5HD	三角法 3RD ANGLE PROJECTION	SCALE 1/10	TITLE ホッパー取付寸法図 HOPPER SPACE
APPROVED 大井	CHECKED 水野	DRAWN 水野	DWG. NO. 3HK90708

3 No. HK90708

図形寸法標準
公団上村研
流産加工
電機部
配線

SHK90708
CADAM
08/08/00
131/21

【CAD区分】
A:全CAD
B:半CAD
プランク:手書き

【設備区分】
A:加工品
B:部品
C:組立品
D:組立品
P:電加工品
R:電機部品
S:電ソフト
T:電機立品

CAD	M	A
図番	AD	
図名		
製		X
検		X
認		X
許		X
先		
記		
寸		
規		
準		