

90MSJ-5

CLAMP UNIT

ITEM		UNIT	SPECIFICATION		NOTES
			Inch	(Metric)	
Max. Mold Clamping Force		US. ton	88	(80)	
Mold Opening Force		(Metric ton)	6.6	(6.0)	
Mold Closing Speed		ft/min	173.9	(53)	
Mold Opening Speed		(m/min)	173.9	(53.0)	
Platen	(H)	inch (mm)	22.05	(560)	
Size	(V)		22.05	(560)	
Clearance between	(H)		15.16	(385)	
Tie Bars	(V)		15.16	(385)	
Maximum Clamp Stroke			18.5	(470)	
Maximum Daylight			25.6	(650)	
Minimum Mold Thickness			7.1	(180)	
Hydraulic ejector			US ton (Metric ton)	3.3	
Stroke		inch (mm)	3.3	(85)	
Maximum Mold Size	Hor. load	inch (mm)	(H)	22.05	(560)
			(V)	14.76	(375)
	Ver. Load		(H)	14.76	(375)
			(V)	22.05	(560)
Minimum Mold Size	(H)		.		Full clamp tonnage
	(V)		.		

90MSJ-5

INJECTION UNIT

ITEM		UNIT	SPECIFICATION		NOTES
			Inch	(Metric)	
Theoretical Injection Volume		cu.in (cm ³)	9.0	(148)	
Inj. Shot Weight	PS	oz	4.80	(136)	
	PE	(g)	3.81	(108)	
Plasticizing Capacity	PS	lbs/hr	177	(80)	
		(kg/hr)			
Max. Injection Pressure		psi (kg/cm ²)	28440	(2000)	
Injection Rate	Standard	cu.in /sec	9.8	(160)	
	Option	(cm3/sec)	0.0		
Injection Horse Power		HP (PS)	43		
Screw Diameter		in (mm)	1.42	(36)	
Screw L/D		---		20	
Screw Stroke		in (mm)			
Screw Speed	High speed	rpm	~ 350		
	Mid. speed		~		
	Low speed		~		
Nozzle protrusion		in (mm)	1.18	(30)	

90MSJ-5**GENERAL**

ITEM	UNIT	SPECIFICATION		NOTES
		Inch	(Metric)	
Electric Motor Capacity	HP (kw)	20	(15)	15kw
Electric Heater Capacity for Screw Barrel	kw	6.15		
Electric Heater Capacity for standard Nozzle		0.3		
Oil reservoir Capacity	us gal (ltr)	63.9	(242)	
Overall Dimension	(L)	ft	15.1	(4.6)
	(W)	(m)	4.6	(1.4)
	(H)		5.6	(1.7)
Machine Weight	us ton (metric ton)	5.0	(4.5)	

Remarks

1. Injection weight, injection rate and plastcizing capacity are dependent upon molding conditions and resin used.
2. Specifications are subject to change without notice.

1K90515

図形法 株式会社三菱重工業株式会社
 公認上村重工業株式会社
 加工製造部

3HK90515
 CADAM 08/13/00
 13.13

ICAD区分
 A:全CAD
 B:半CAD
 プラック:手書き
 I:目視区分
 A:加工品
 B:部材
 C:購入品
 D:組立品
 P:電加工品
 R:電鍍品
 S:電メッキ
 T:電線品

CAD M A

図番 AD

部番

1 X

2 X

3 X

4 X

5 X

6 X

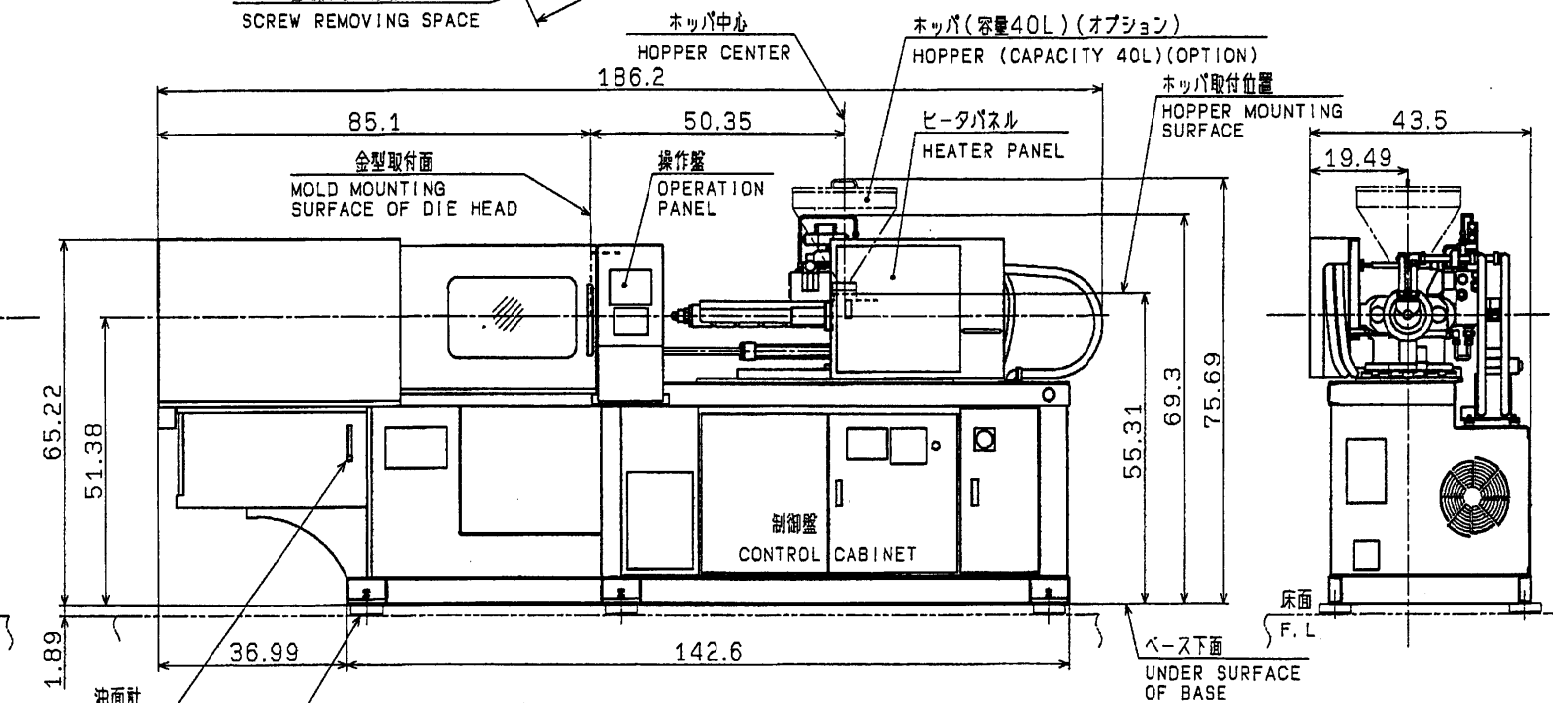
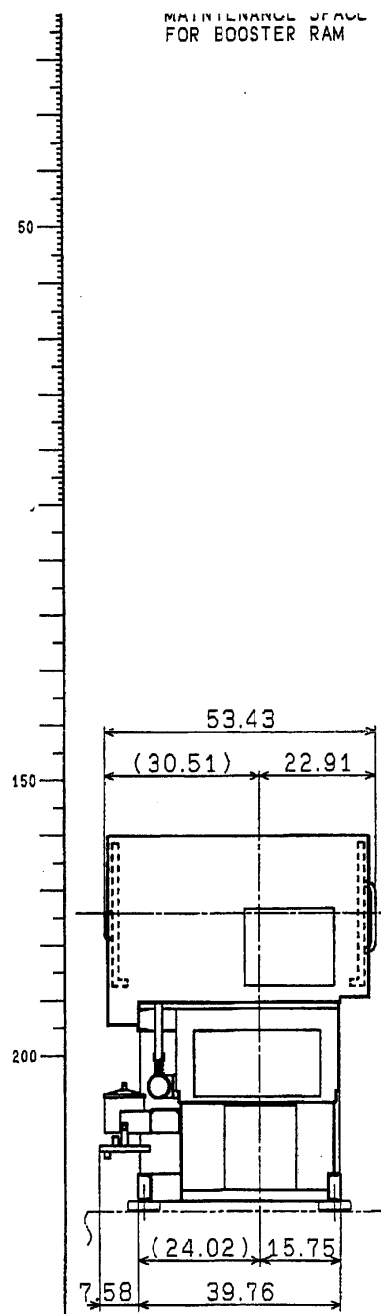
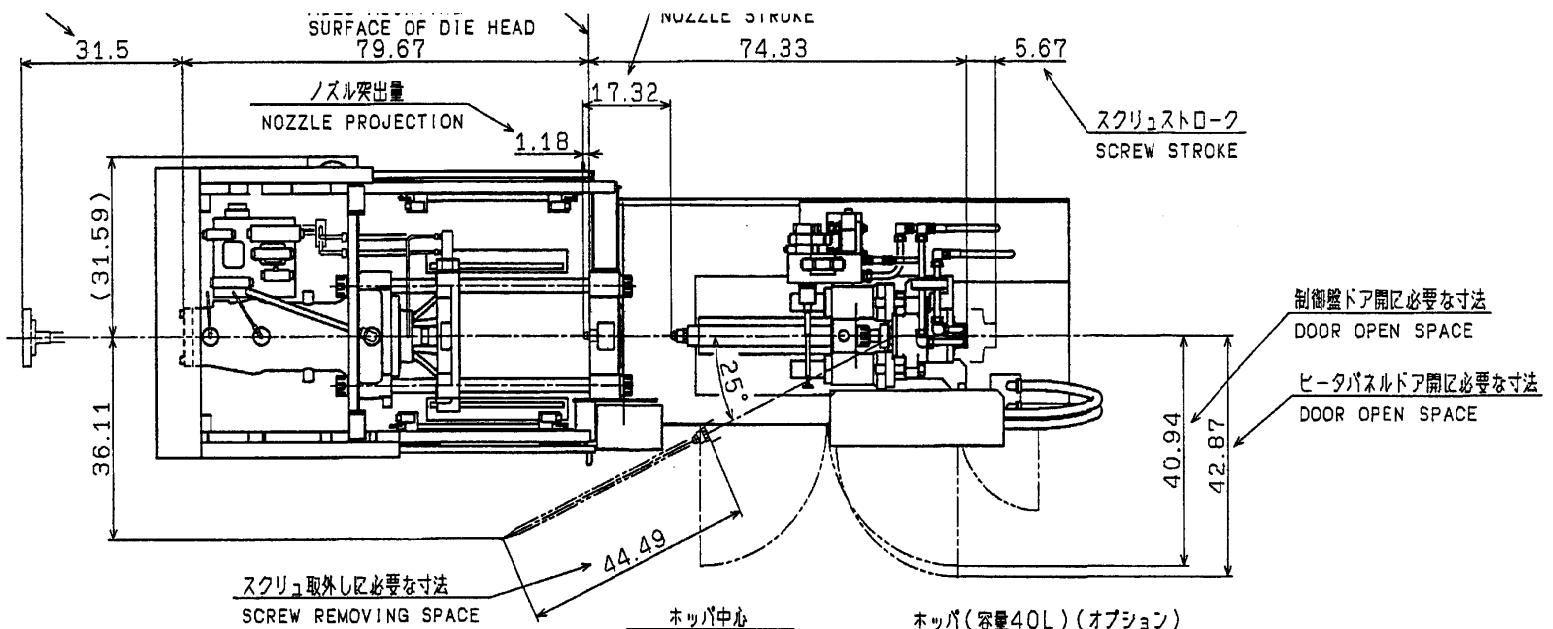
7 X

8 X

9 X

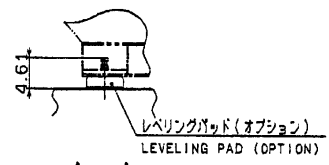
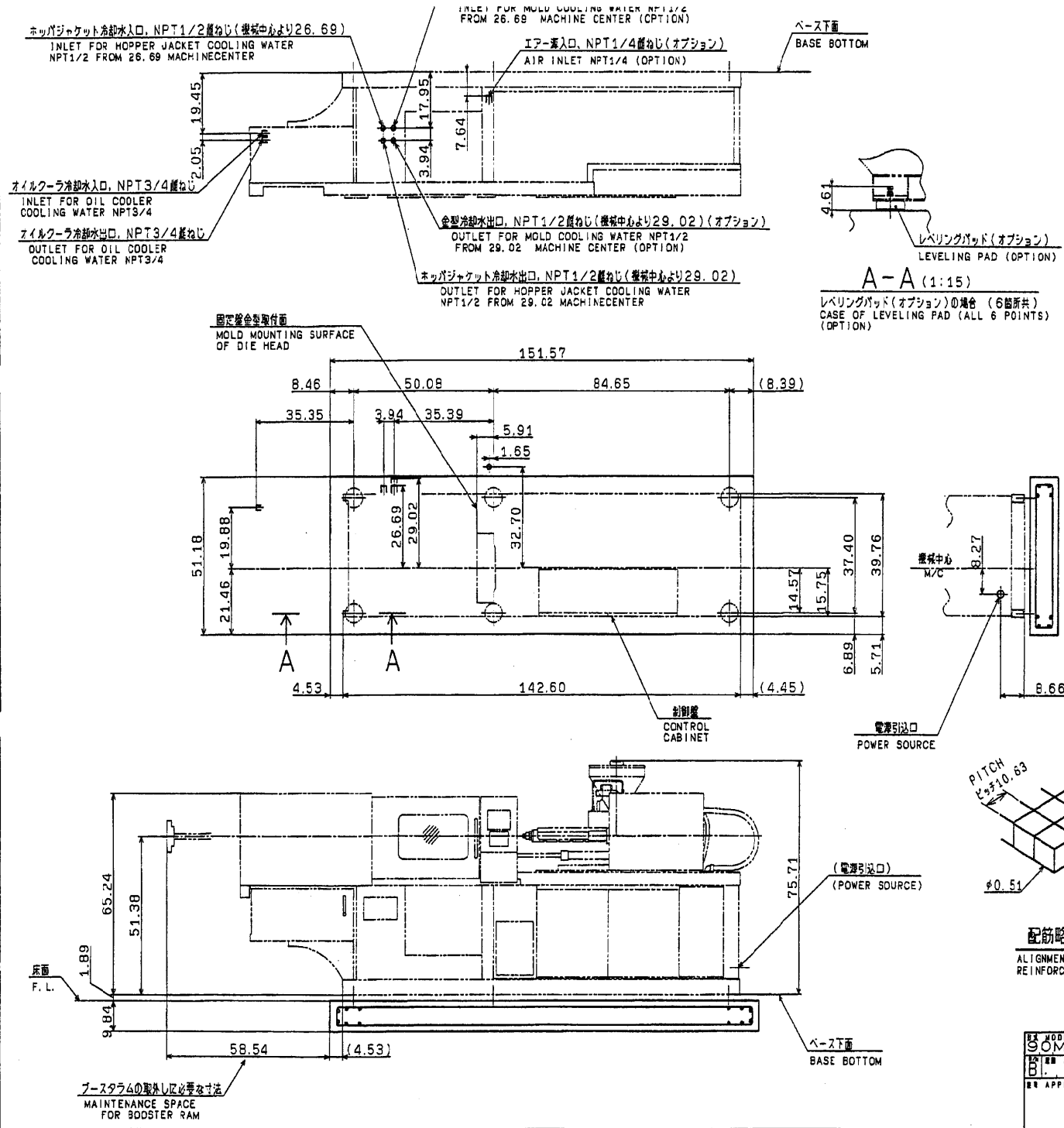
A3

MAINTENANCE SPACE
 FOR BOOSTER RAM



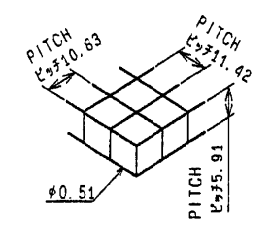
MODEL 3HMSJ-5	三角法 3rd ANGLE PROJECTION	尺 SCALE 1 / 25	名 NAME 三菱射出成形機外形寸法図 INJ. MOLD. M/C
図番 NEXT ASS'Y B	承認 APPROVED 大野	検査 CHECKED 伊藤	製図 DRAW 12.6.2
B/M 番 DVG. NO.		SUFFIX MARK PAGE	
3HK90515		3HK90515	

NOTE.
 1. ALL DIMENSIONS ARE SHOWN IN INCH.



A-A (1:15)
 レベリングパッド(オプション)の場合 (6箇所共)
 CASE OF LEVELING PAD (ALL 6 POINTS)
 (OPTION)

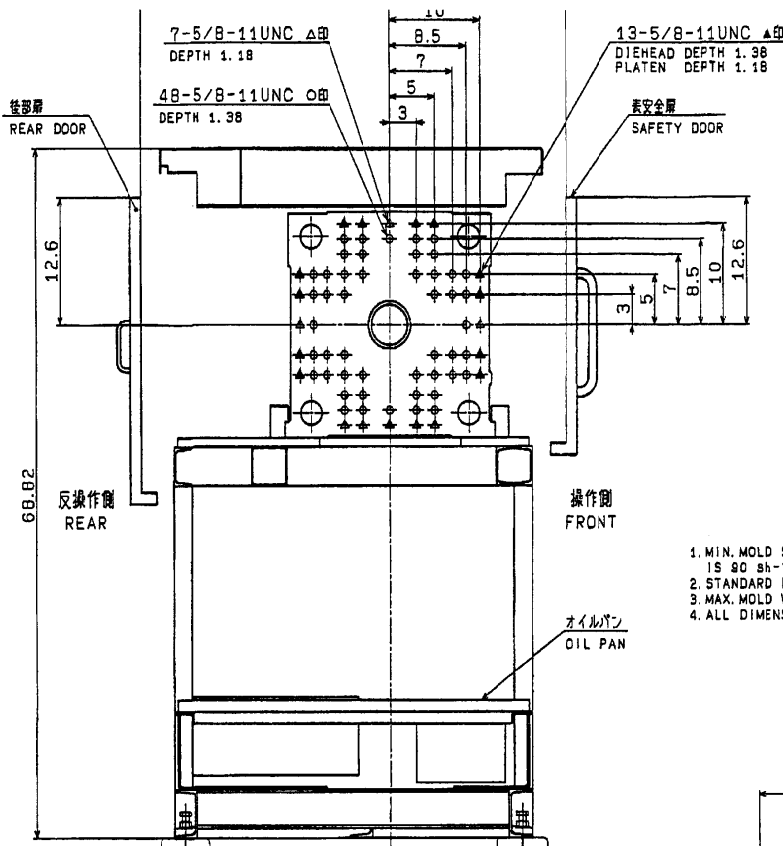
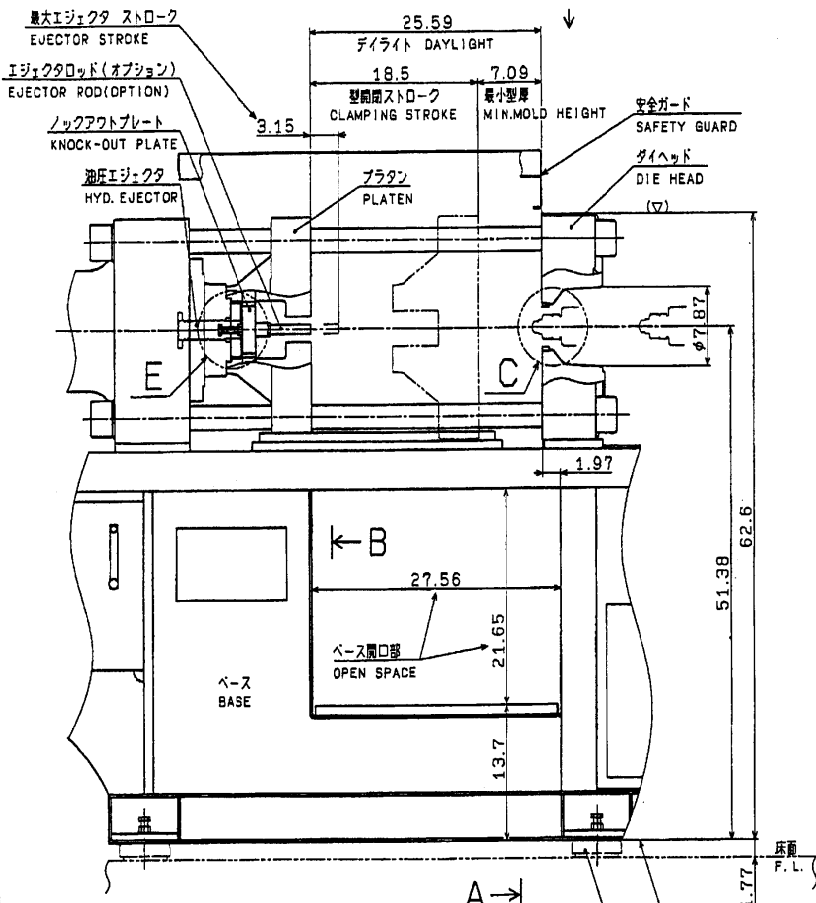
- PLEASE ADOPT THE REINFORCED CONCRETE TO THE FOUNDATIONS.
- BEARING CAPACITY OF SOIL SHOULD BE OVER 7.11t/in² AND IN CASE UNDER 7.11t/in² IT IS NECESSARY TO BE REINFORCED WITH CONCRETE PILES.
- GROUTING OF BASE FEET IS RECOMMENDED.
- WEIGHT
 - MACHINE : 5.1 US-ton
 - DIE : 0.42 US-ton
 - OIL : 0.23 US-ton
 - TOTAL : 5.72 US-ton
- FOUNDATION WEIGHT : 3.3 US-ton
- IN THE CASE OF SEATING THE FOUNDATION WITH MOUNTING PAD, THE OUTSIDE PIPING SHALL BE DESIGNED WITH FLEXIBLE JOINT DEVICE.
- ALL DIMENSIONS ARE SHOWN IN INCH.



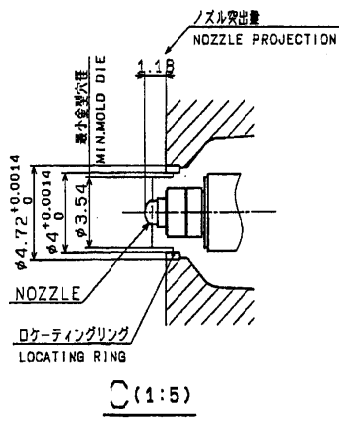
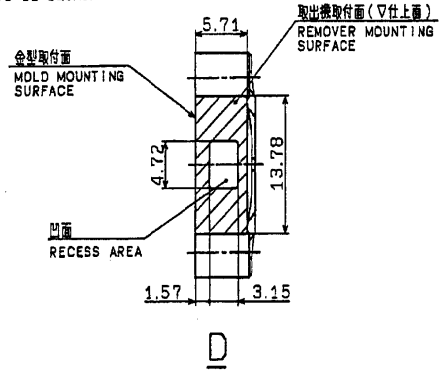
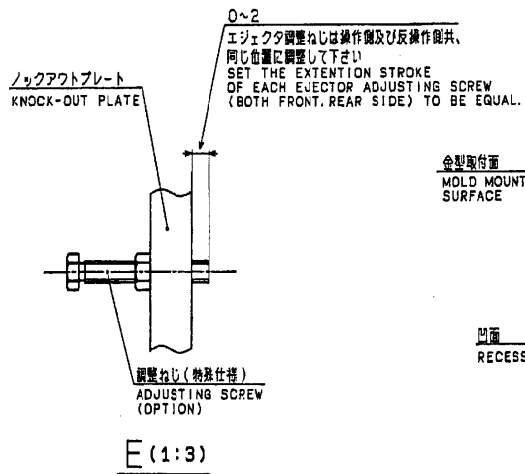
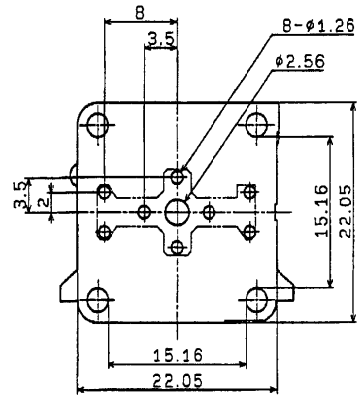
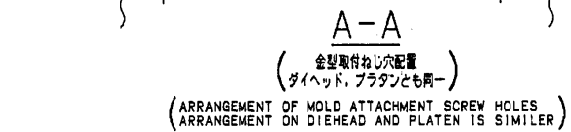
配筋略図
 ALIGNMENT OF
 REINFORCING ROD

MODEL SOMSJ-5	三角法 S/S ANGLE	RE SCALE 1	NAME 基礎図
PROJECTION	PROJECTION 1/25	FOUNDATION	
APPROVED	CHECKED	DATE	DWG. NO.
水野	水野	12.6.7	3HK90814.
SUFFIX MARK	PAGE	3HK90814	

1/25
 3HK90814
 CAD M/A
 3HK90814

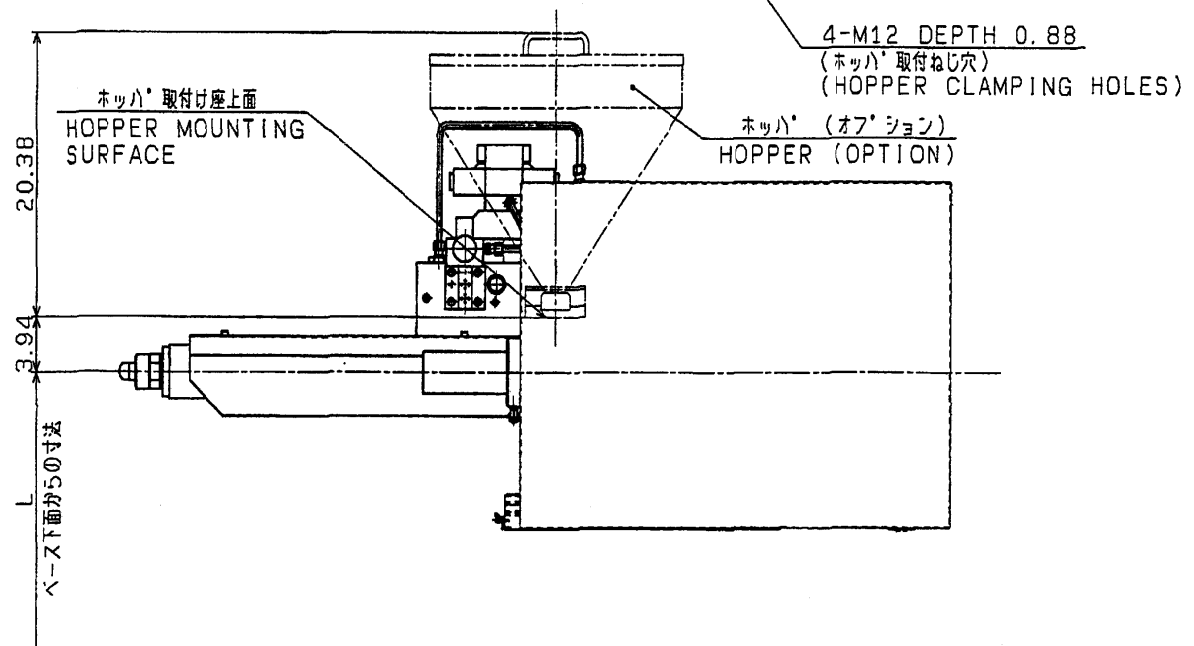
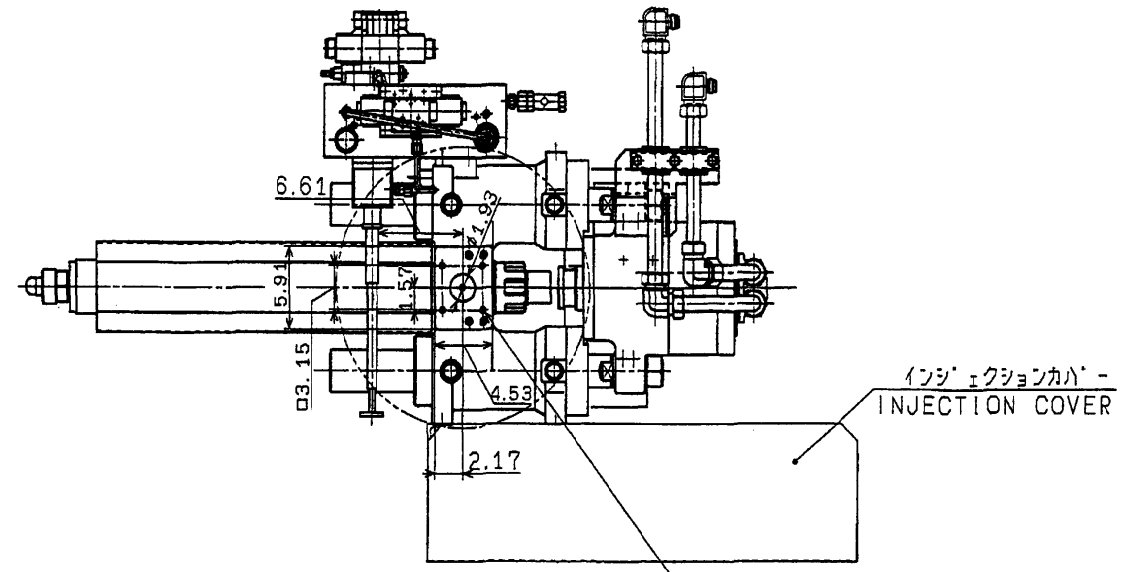
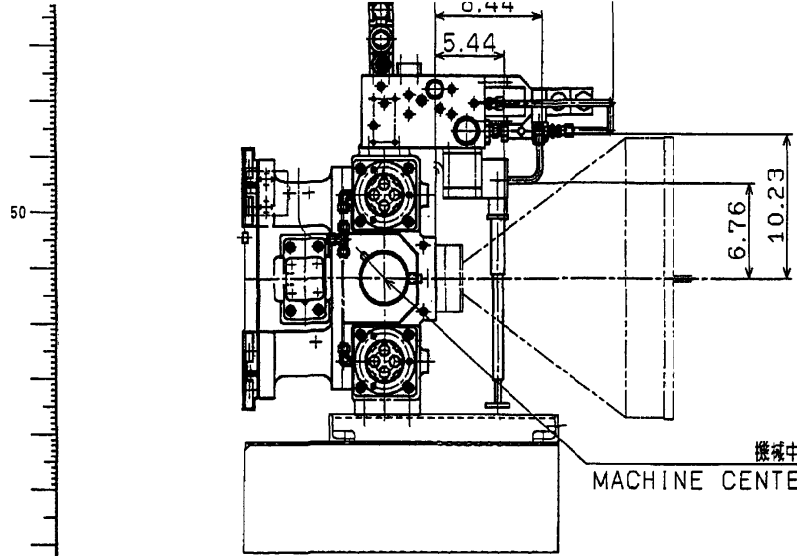


- 1. MIN. MOLD SIZE : 8.27x8.27 (WHEN CLAMPING FORCE IS 90 lb-ton)
- 2. STANDARD LOCATING RING INSIDE DIAMETER IS #4
- 3. MAX. MOLD WEIGHT (CORE) 408LB.
- 4. ALL DIMENSIONS ARE SHOWN IN INCH.



MODEL 3HK93515	角法 1	RE SCALE 1/10	NAME 金型取付寸法図
DATE 12.5.11	DWG. NO. 3HK93515	SUFFIX	PAGE

04A
 SHIBUBI
 CAD/DC
 15.11.02
 [CADER]
 A: CAD
 B: CAD
 C: CAD
 D: CAD
 E: CAD
 F: CAD
 G: CAD
 H: CAD
 I: CAD
 J: CAD
 K: CAD
 L: CAD
 M: CAD
 N: CAD
 O: CAD
 P: CAD
 Q: CAD
 R: CAD
 S: CAD
 T: CAD
 U: CAD
 V: CAD
 W: CAD
 X: CAD
 Y: CAD
 Z: CAD



機種	L
90MSJ-5HD	51.38
150MSJ-5HD	54.92

MODEL 5HD	三角法 3RD ANGLE PROJECTION	SCALE 1/10	TITLE ホッパー取付寸法図 HOPPER SPACE
APPROVED 大井	CHECKED 水野	DRAWN 水野	DWG. NO. 3HK90708

3 No. HK90708

図形寸法標準
公団上村研
流産加工
電機部
記号

SHK90708
A/08/00
9A
18/12/21

[CAD部分]
A:全CAD
B:半CAD
プランク:手書き

[図面部分]
A:加工品
B:検査
C:組立品
D:組立品
P:電加工品
R:電鍍品
S:電ソフト
T:電鍍品

CAD	M	A
図	AD	
製		
検		
組		
立		
先		
行		
部		