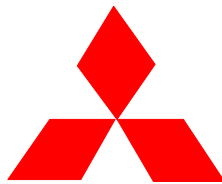


MITSUBISHI INJECTION MOLDING MACHINE
SPECIFICATIONS

610MGV-110



MHI Injection Molding Machinery, Inc.

Ref: MHI-PT document # ED-1D33-4393

610MGV-110

CLAMP UNIT

ITEM		UNIT	SPECIFICATION		NOTES	
			Inch	(Metric)		
Max. Mold Clamping Force		US. ton	606	(550)		
Mold Opening Force		(Metric ton)	30.3	(27.5)		
Mold Closing Speed	High Speed	ft/min (m/min)	164.1	(50)		
	Low Speed		6.56	(2.0)		
Mold Opening Speed	Detaching Speed		6.56	(2.0)		
	High Speed		164.1	(50)		
	Low Speed		6.56	(2.0)		
Platen Size	(H)		inch (mm)	49.21	(1250)	
	(V)			49.21	(1250)	
Clearance between Tie Bars	(H)			33.86	(860)	
	(V)	33.86		(860)		
Maximum Clamp Stroke				47.24	(1200)	
Maximum Daylight				62.99	(1600)	
Mold Thickness	Minimum			15.75	(400)	
	Maximum			31.5	(800)	
Hydraulic ejector	Force	US ton (Metric ton)		14.3	(13.0)	
	Stroke	inch (mm)		5.9	(150)	
	Forward Speed	ft/min	24.0	(7.3)		
	Retract Speed	(m/min)	29.5	(9.0)		
Maximum Mold Size	Hor. load	(H)	49.21	(1250)		
		(V)	33.46	(850)		
	Ver. Load	(H)	33.46	(850)		
		(V)	49.21	(1250)		
Minimum Mold Size	(H)	inch (mm)	21.65	(550)	Full clamp tonnage	
	(V)		21.65	(550)		
Maximum mold weight			US ton (Metric ton)	5.	(4.5)	

610MGV-110

INJECTION UNIT

ITEM		UNIT	SPECIFICATION		NOTES
			Inch	(Metric)	
Theoretical Injection Volume		cu.in (cm ³)	191.6	(3140)	
Inj. Shot Weight	PS	oz	101.94	(2890)	
	PE	(g)	81.83	(2320)	
Plasticizing Capacity	PS	lbs/hr (kg/hr)	1015	(460)	
Max. Injection Pressure		psi (kg/cm ²)	25880	(1820)	
Injection Rate	Standard	cu.in /sec	35.4	(580)	
	Option	(cm3/sec)	52.2	(855)	
Injection Horse Power		HP (PS)	141		
Screw Diameter		in (mm)	3.54	(90)	
Screw L/D		---		22	
Screw Stroke		in (mm)	19.49	(495)	
Screw Speed	High speed	rpm	~ 157		
	Mid. speed		~		
	Low speed		~ 108		
Nozzle protrusion		in (mm)	1.18	(30)	
Nozzle Touch Force		us ton (metric ton)	6.83	(6.2)	

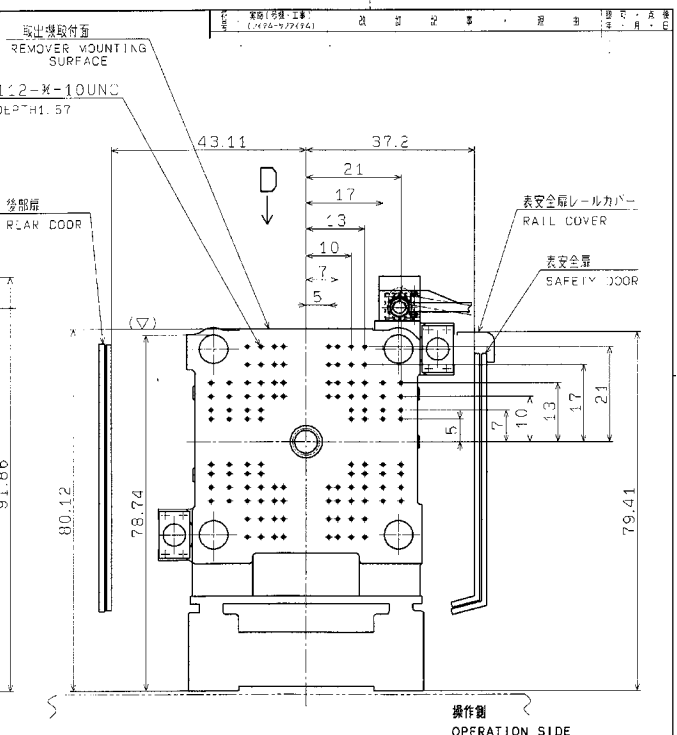
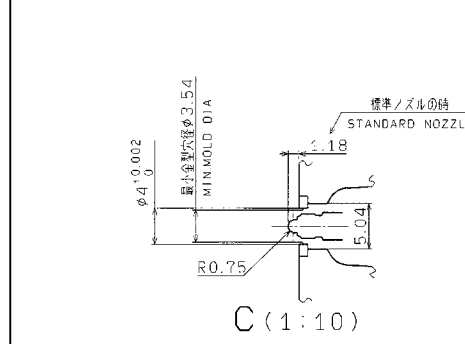
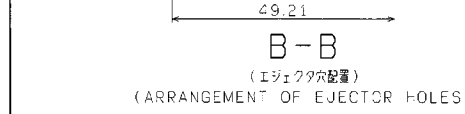
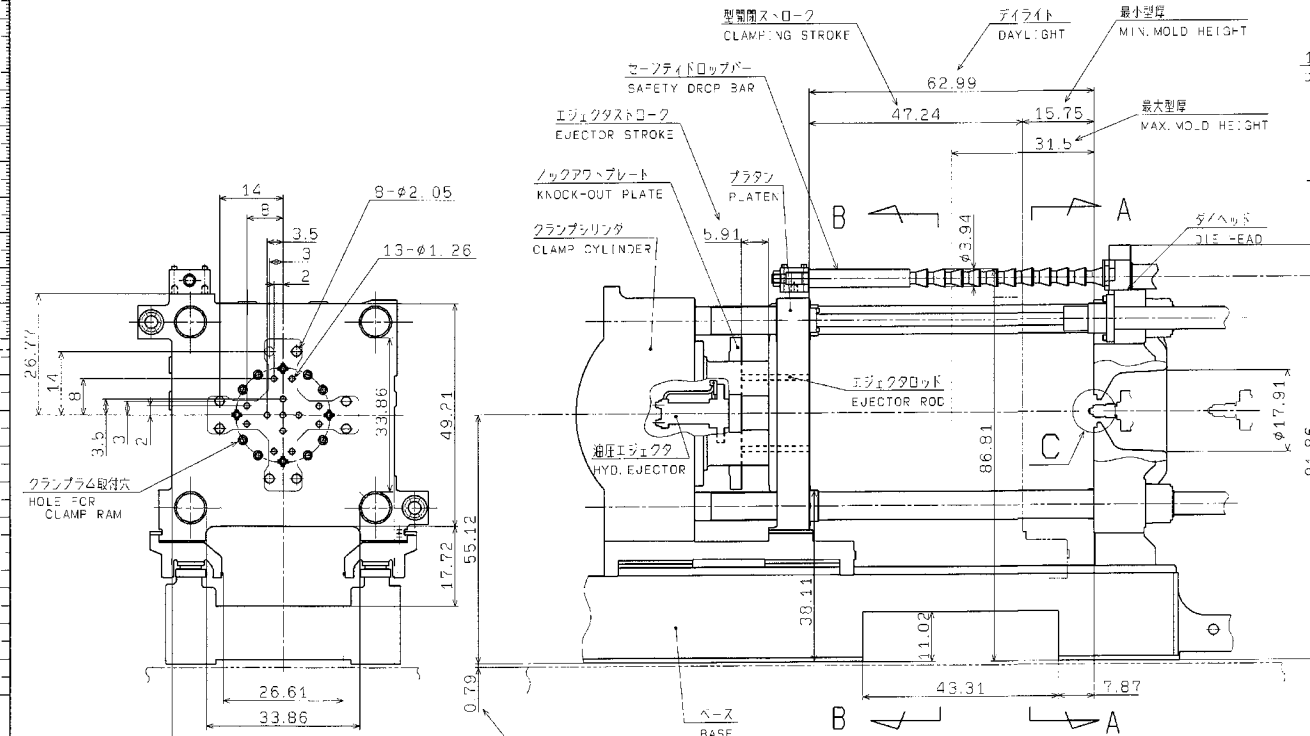
610MGV-110**GENERAL**

ITEM	UNIT	SPECIFICATION		NOTES	
		Inch	(Metric)		
Electric Motor Capacity	HP (kw)	90	(67)	45kw + 22kw	
Electric Heater Capacity for Screw Barrel	kw	33.4			
Electric Heater Capacity for standard Nozzle		0.3			
Oil reservoir Capacity	us gal (ltr)	370	(1400)		
Lub. Oil Capacity for Bearing Housing		1.72	(6.5)		
Overall Dimension	(L)	ft	26.3	(8.0)	
	(W)	(m)	8.22	(2.4)	
	(H)		7.22	(2.20)	
Machine Weight	us ton (metric ton)	30.9	(28.0)		

Electric Capacity	KVA	125		@ 460V, 60Hz
Full Load Current	A	157		@ 460V , 60 Hz
Cooling Water supply for Heat exchanger	gpm (lpm)	18.5	(70)	Soft water, 90°F or below
Cooling Water supply for Feed Throat		5.3	(20)	

Remarks

1. Injection weight, injection rate and plasticizing capacity are dependent upon molding conditions and resin used.
2. Specifications are subject to change without notice.



1. MIN. MOLD SIZE: 21.65x21.65 (WHEN CLAMPING FORCE IS 806 US ton)
 2. HEX0.94x14.92 (4PIECES), HEX1.61x14.92 (4PIECES). EJECTOR RODS ARE SUPPLIED WITH MACHINE (EJECTOR ROD WITH MALE SCREW 3/4-10UNC; HEX0.94 & 1-BUNC; HEX1.61) WHEN OTHER EJECTOR RODS ARE REQUIRED THEY SHALL BE PREPARED BY CUSTOMER
 3. ALL DIMENSION ARE SHOWN IN INCH.
1. 最小金型寸法は、550x550mm (型筒径539.4mm (550L)) の時
 2. 対辺24mm 六角x379.14本、対辺41mm 六角x379.14本のエジェクタロッド (N-10UNC仕込み式: 対辺24、1-BUNC仕込み式: 対辺41) が付属します。上記以外のものが必要な場合は、事前のご準備願います。
 3. 文中の単位は「NC」で表示です。

MODEL 610MC5	三角法 3角法	SCALE 1	図名 金型取付寸法図
PRODUCTION B300008	1/20	DIE SPACE	
APPROVED [Signature]	CHECKED [Signature]	DRAWN [Signature]	DATE 18.9.7
3FK93866			SUFFIX MARKING

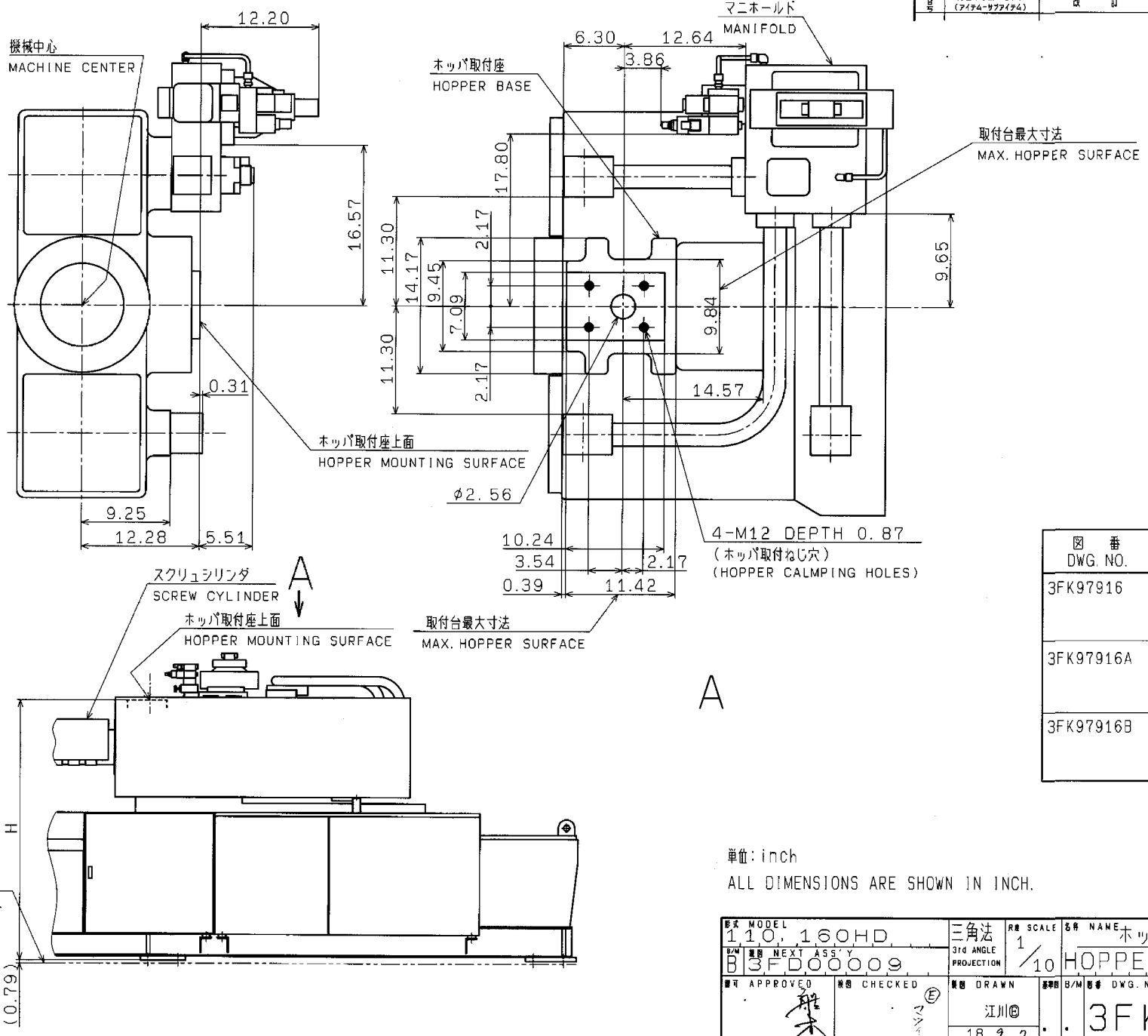
FOR REFERENCE ONLY

DWG NO
3FK97916

図形 編成 標準 組立 検査 公差 仕様 変更 履歴 管理 部門 承認 担当者 承認者 承認日
3FK97916
CADAM A 09/04/08
SEFH 14.1.19

【CADER】
A:全CAD
B:半CAD
プラック:手書き
【仕様区分】
A:加工品
B:資材
C:購入品
D:組立品
P:電加工品
R:電鍍品
S:電メッキ品
T:電線品

CAD	M	A
図番	AD	
部番		
製		X
検		X
配		X
本		X
先		
計		
部		
計		
寸		
A3		



図番 DWG. NO.	H	機種 MODEL
3FK97916	67.40	610MG5-110HD 720MG5-110HD 720MG5-160HD
3FK97916A	70.55	720MG5W-110HD 950MG5-110HD 950MG5-160HD
3FK97916B	73.31	950MG5W-110HD 950MG5W-160HD 1200MG5-160HD

A

単位: inch
ALL DIMENSIONS ARE SHOWN IN INCH.

形式 MODEL 110, 160HD	三角法 3RD ANGLE PROJECTION	縮尺 SCALE 1/10	名称 NAME ホッパ取付寸法図 HOPPER SPACE
B/W 変更 NEXT ASS'Y B3FD000009	承認 APPROVED	検閲 CHECKED	製図 DRAWN 江川
製図者 B/M 番号 DWG. NO. 18.9.7	3FK97916B		SUFFIX MARK PAGE

MITSUBISHI HEAVY INDUSTRIES
PLASTIC TECHNOLOGY CO., LTD. (参考番号 3CK97906) REF. DWG. NO.

FOR REFERENCE ONLY